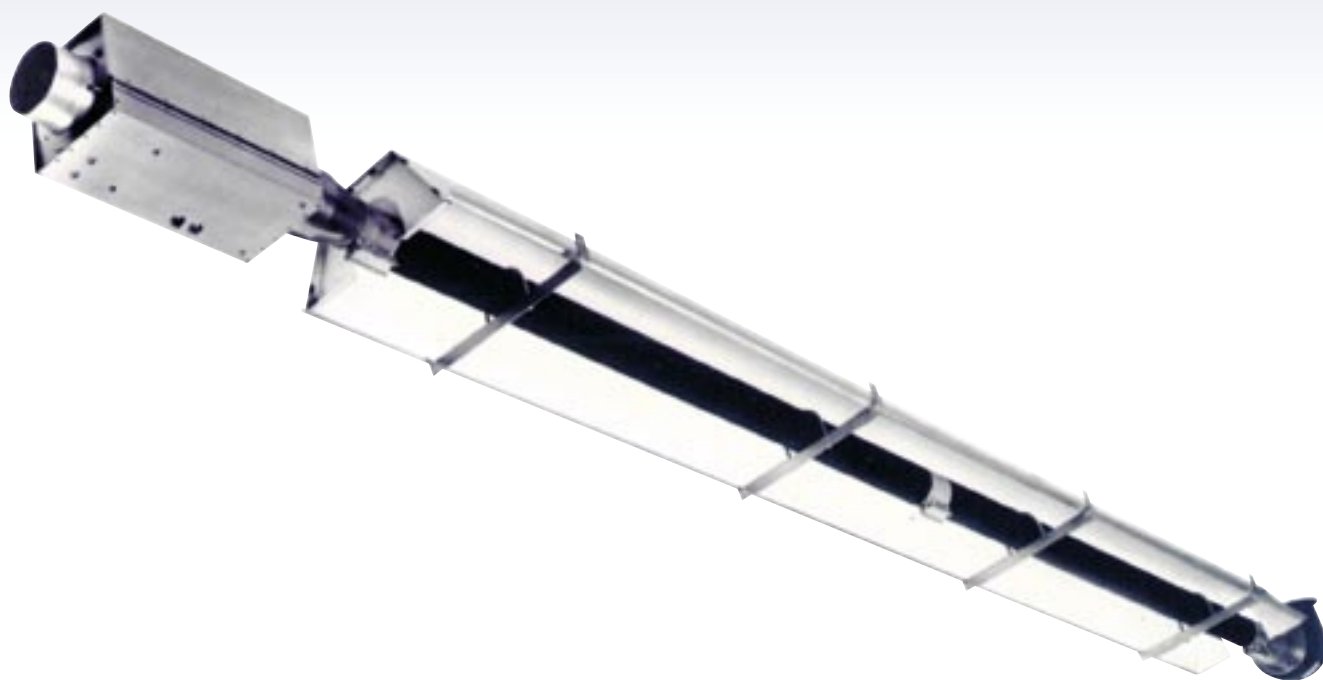


# prrt

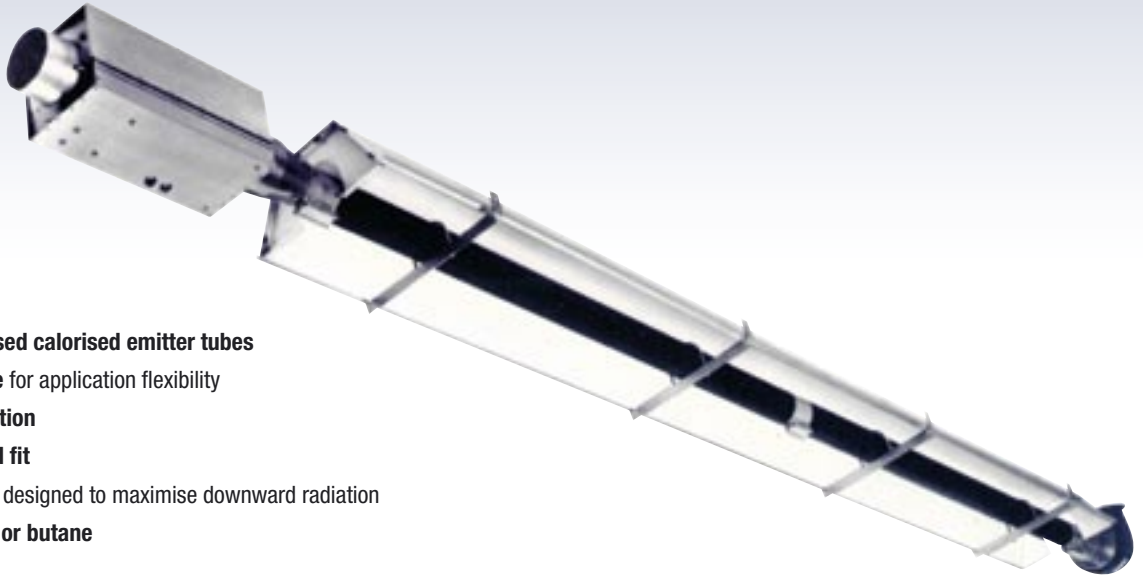
Gas fired tube heaters – 2 year parts and labour guarantee.  
Maximum efficiency lightweight radiant heating tubes



expect**more**



The new range of gas fired radiant tube heaters provides direct heat and warmth in a multitude of industrial, commercial and retail applications. The range is available in three types comprising 'U' tubes, single linear and double linear tubes.



- Heat-treated aluminised calorised emitter tubes
- 'U' tube or linear tube for application flexibility
- Lightweight construction
- Easy to assemble and fit
- Aluminium reflectors designed to maximise downward radiation
- Natural gas, propane or butane

**Construction**

Lightweight construction using aluminised calorised emitter tubes.

**Application**

Suitable for any commercial/industrial application where radiant is preferred because of high air changes or where localised heating is required such as warehouses and sports halls.

Recommended mounting heights between 2.3m and 15m.

**Range**

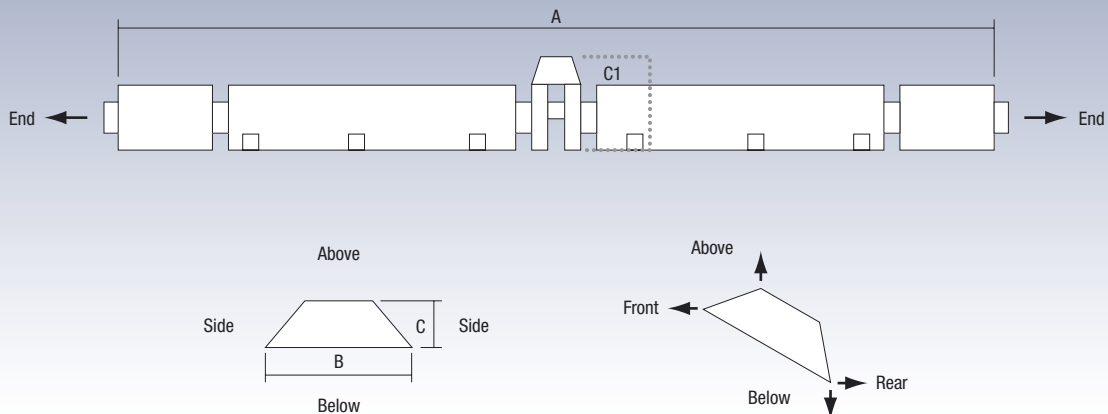
There are eight models in each of the three types of gas fired radiant tube covering outputs from 9kW to 94kW.

**Accessories/options**

1. Wall mounting bracket
2. Sports guard
3. Flexible gas connection
4. Suspension chains
5. Gas isolating tap
6. mc100 (black bulb sensor)



mc100



# prt gas fired tube heaters dimensions and specifications

## 'U' tube models

model ptu		09	12	15	25	30	35	40	45
Input rating	kW	9.00	11.40	15.00	23.00	29.20	34.50	42.20	47.00
Length (A)	mm	3100	3100	3100	5385	5510	5510	6970	6970
Width (B)	mm	460	460	460	460	715	715	715	715
Height (C)	mm	175	175	175	175	210	210	210	210
Heater weight	kg	31	31	31	47	66	66	81	81
Gas connection		R-1/2" BSP external							
Supply	mbar	Natural gas – min 17, max 25 Propane – min 25, max 45 Butane – min 20, max 35							
Electrical supply		230V 50Hz 125W, current rating 0.55A, fuse externally 3A							
Flue connection diameter	mm	127							
Air inlet diameter	mm	101.6							

## Single linear tube models

model pts		09	12	15	25	30	35	40	45
Input rating	kW	9.00	11.40	15.00	23.00	29.20	34.50	42.20	47.00
Length (A)	mm	5493	5493	5493	10065	9955	9955	13000	13000
Width (B)	mm	340	340	340	340	340	340	340	340
Height (C)	mm	180	180	180	180	180	180	180	180
Heater weight	kg	33	33	33	46	62	62	79	79
Gas connection		R-1/2" BSP external							
Supply	mbar	Natural gas – min 17, max 25 Propane – min 25, max 45 Butane – min 20, max 35							
Electrical supply		230V 50Hz 125W, current rating 0.55A, fuse externally 3A							
Flue connection diameter	mm	125							
Air inlet diameter	mm	101.6							

## Double linear tube models

model ptds		09	12	15	25	30	35	40	45
Input rating	kW	18.00	22.80	30.00	46.00	58.40	69.00	84.40	94.00
Length (A)	mm	10934	10934	10934	20078	19858	19858	25948	25948
Width (B)	mm	340	340	340	340	340	340	340	340
Height (C)	mm	392	392	392	392	392	392	392	392
Heater weight	kg	60	60	60	92	124	124	158	158
Gas connection		R-1/2" BSP external							
Supply	mbar	Natural gas – min 17, max 25 Propane – min 25, max 45 Butane – min 20, max 35							
Electrical supply		230V 50Hz 125W, current rating (each burner) 0.55A, fuse externally 3A							
Flue connection diameter	mm	150							
Minimum flue diameter	mm	125				150			
Air inlet diameter	mm	101.6							

## Mounting heights (recommended)

model ptu/pts/ptds		09/12/15	25	30/35/40/45
Input rating	m	2.5 – 6.0	3.0 – 8.0	3.8 – 10.0 4.0 – 12.5 4.8 – 13.5 5.6 – 15.0
Air inlet diameter	m	2.3 – 4.5	2.7 – 5.0	3.3 – 7.0 3.7 – 8.0 4.0 – 9.0 4.8 – 10.0

## Clearances (minimum to combustible materials)

model ptu/pts/ptds		09/12/15	25	30/35/40/45
Side	mm	450	510	760
Above	mm	450	450	610
Below	mm	1220	1220	2285
End	mm	450	510	610
Front	mm	575	610	760
Rear	mm	305	305	380

**MAGMA ENERGY SERVICES LTD**

**Unit 5 Image Business Park  
East Cannock Road  
Hednesford  
Cannock  
WS12 1LT**

**Tel: 0845 8682119 Fax: 01543 876582**

**www.magma-group.co.uk**

**Email office@magma-group.co.uk**



Whatever your heating and ventilation requirements, powrmatic can provide a total solution from a single source.

Our experienced sales engineers provide expert advice on all aspects of design and application, with after sales service and spares availability guaranteed by our network of regional service engineers and spares stockists strategically located throughout the UK.

powrmatic offers customers the most comprehensive range of heating and ventilation solutions available in Europe. Whatever your requirements, powrmatic has the capability to provide a total solution from a single source with products proven in some of the world's most prestigious and demanding applications.

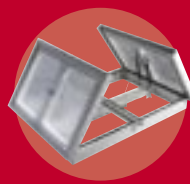
**pgv**

Glass louvred ventilator. Both functional and attractive. Specifically designed for modern building requirements.



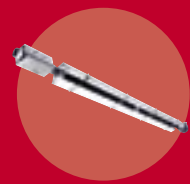
**tfv**

Twin flap natural ventilator. Suitable for smoke venting & featuring very low air leakage when closed.



**prt**

Direct heat and warmth for localised heating in a range of applications.



**Cabinet heaters**

Indirect gas or oil fired floor standing air heaters for multiple use.



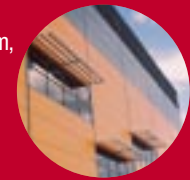
**pv**

Powered roof extract. Heavy duty high performance unit.



**bsl**

Fixed solar shading system, providing attractive yet low cost solutions to reducing heat gains.



**Gas unit heaters**

A quality range of suspended gas fired unit heaters.



**Flue & chimney**

Flue systems for domestic, commercial and industrial applications.



**cec**

Heat-recovering thermal economiser providing excellent heat distribution for high-roofed buildings.



## Contact us for information and advice about our expert service

Hort Bridge, Ilminster, Somerset, TA19 9PS United Kingdom

Tel: +44 (0)1460 53535 Fax: +44 (0)1460 52341

Email: info@powrmatic.co.uk

www.powrmatic.co.uk

The information contained in this brochure was accurate at the date of publishing. However the company reserves the right to introduce at any time modifications and changes of details as may be necessary. To avoid any misunderstanding, interested parties should contact the company to confirm whether any material alterations have been made since the date of this brochure.

Designed and produced by **Lionheart** www.lionheart.co.uk



25574